

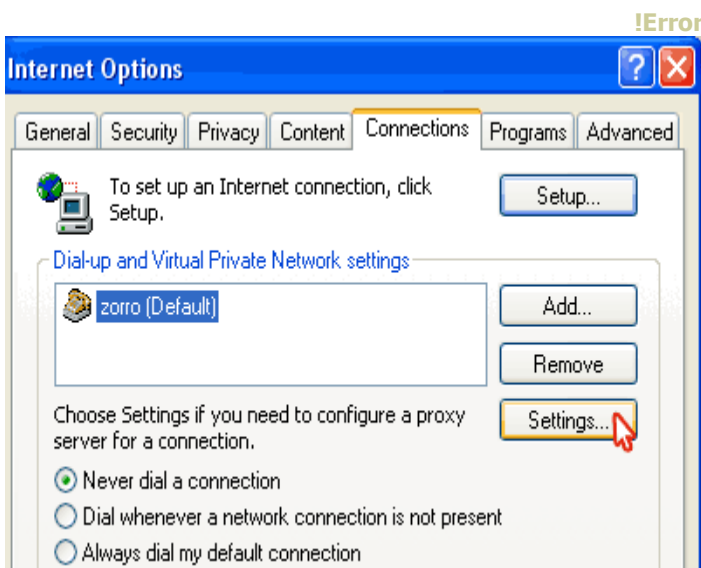


۱. ابتدا وارد نرم افزار اینترنت اکسپلورر شوید.

۲. سپس در نوار بالای برنامه، مطابق شکل روبرو، به دنبال منوی Tools بگردید.

۳. پس از کلیک بر روی گزینه Tools نیز به دنبال گزینه Internet Options بگردید.

۴. پس از کلیک بر روی گزینه Internet Options پنجره جدیدی با نام Internet Options مطابق شکل زیر باز می شود.

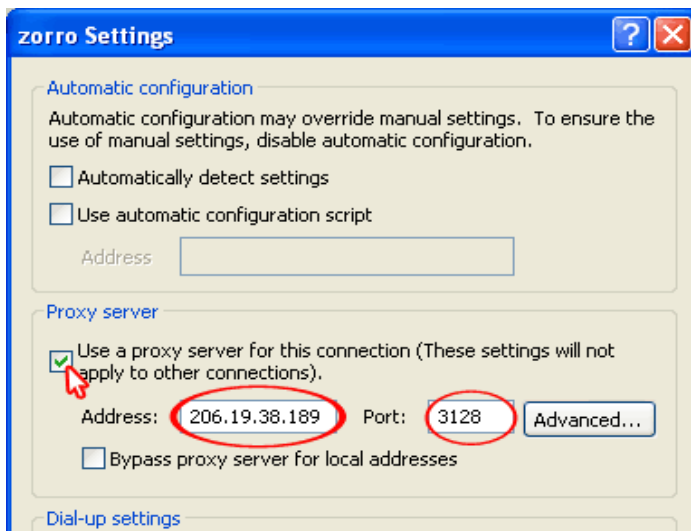


۵. حالا در بالای پنجره Internet Options شما چند "تب" (منو) دارید، که تب پنجم گزینه Connections است که باید بر روی آن کلیک کنید.

۶. حالا در تب Connections شما، بخش Dial-up and Virtual Private Network settings دایالپ هایی که در ویندوزتان ایجاد کرده اید در این قسمت است. (شکل روبرو)

۷. باید دایلاپی را که با آن وصل شده اید به وسیله موس انتخاب (آبی) نمائید و سپس کلید Settings را که در سمت راست پنجره است، کلیک نمائید. (شکل روبرو)

۸. در این مرحله (مطابق شکل زیر) پنجره جدیدی با نام Settings باز می شود که دارای سه بخش است. بخش وسط یا دوم بخش Proxy server است که شما باید به وسیله موس، با کلیک بر روی مربع گزینه Use a proxy server for this connection را فعال کنید.



۹. وقتی که بخش Proxy server فعال شود، دو قسمت Address و Port فعال می شوند تا بتوانیم در این قسمتها تایپ کنیم. (شکل روبرو)

۱۰. حالا شما باید یک Address و Port را با دقت در این قسمت ها تایپ کنید که جاهای زیادی می توانید به پروکسی های رایگان دسترسی پیدا کنید. (مطابق شکل روبرو)

۱۱. پس از تایپ Address و Port در پنجره Settings کلید OK را بزنید و سپس پنجره Internet Options را نیز OK کنید.

۱۲. حالا در صورتیکه تمام مراحل را درست انجام داده باشید و پروکسی که از آن استفاده می کنید باز باشد میتوانید سایتهای فیلتر شده را ببینید.

## پراکسی های رایگان:

12.101.107.94:1080	202.88.152.184:80	212.253.33.206:80	63.205.73.22:15286
12.101.28.250:3128	202.88.153.116:80	212.253.33.209:80	64.0.84.101:1813
12.109.59.20:3128	202.88.154.163:80	212.253.33.21:80	64.218.142.244:1080
12.109.61.25:3128	202.88.154.164:80	212.253.33.212:80	64.7.19.92:1080
12.110.37.99:80	202.88.154.20:80	212.253.33.217:80	64.76.18.207:1080
12.125.239.174:80	202.88.154.206:80	212.253.33.218:80	64.94.95.13:3128
12.126.233.66:80	202.88.222.103:80	212.253.33.22:80	65.114.8.8:80
12.130.84.200:3128	202.88.222.142:80	212.253.33.222:80	65.248.24.133:1080
12.146.171.85:3128	202.88.222.177:80	212.253.33.224:80	65.248.24.136:1080
12.146.230.40:80	202.88.222.227:80	212.253.33.225:80	65.33.8.219:7995
12.146.230.41:80	202.88.223.23:80	212.253.33.226:80	65.48.250.97:2280
12.161.72.41:80	202.99.205.210:1813	212.253.33.231:80	65.60.137.110:13451
12.165.28.11:3128	203.146.246.106:8080	212.253.33.232:80	65.60.241.67:1080
12.166.75.65:3128	203.148.160.211:3128	212.253.33.236:80	66.123.212.202:1075
12.172.224.218:3128	203.148.194.36:1080	212.253.33.24:80	66.123.239.100:8080
12.173.164.82:80	203.155.9.133:1080	212.253.33.241:80	66.125.190.62:1080
12.212.69.31:7441	203.167.109.92:1080	212.253.33.246:80	66.168.136.180:1080
12.215.115.78:3128	203.186.154.141:80	212.253.33.249:80	66.171.33.145:43489
12.215.40.33:3128	203.186.220.254:15859	212.253.33.25:80	66.178.47.66:1080
12.217.166.151:2425	203.186.34.75:1978	212.253.33.250:80	66.188.71.33:3380
12.219.104.233:8080	203.197.239.55:1080	212.253.33.251:80	66.188.82.62:10000
12.224.175.158:1478	203.199.147.39:1978	212.253.33.252:80	66.190.61.57:4660
12.230.89.0:13451	203.214.128.0:80	212.253.33.253:80	66.193.135.30:38994
12.252.153.124:13451	203.214.128.100:80	212.253.33.26:80	66.229.108.85:4777
12.32.31.4:8080	203.214.128.102:80	212.253.33.27:80	66.235.4.136:30504
12.36.239.227:3380	203.214.128.104:80	212.253.33.28:80	66.24.41.108:4777
129.49.12.9:1080	203.214.128.109:80	212.253.33.29:80	66.241.236.53:3380
139.55.50.190:14784	203.214.128.110:80	212.253.33.30:80	66.30.53.65:13451
140.118.237.38:1813	203.214.128.112:80	212.253.33.31:80	66.31.133.66:4777
140.127.113.231:1813	203.214.128.114:80	212.253.33.32:80	66.4.199.68:80
141.223.126.165:2280	203.214.128.120:80	212.253.33.33:80	66.4.199.69:80
141.41.95.105:14784	203.214.128.121:80	212.253.33.39:80	66.41.40.196:2280
142.165.52.214:1080	203.214.128.122:80	212.253.33.40:80	66.43.179.83:1080
142.217.183.80:19097	203.214.128.124:80	212.253.33.45:80	66.43.179.86:1080
147.102.7.76:21745	203.214.128.126:80	212.253.33.46:80	66.43.179.87:1080
148.223.118.194:1080	203.214.128.136:80	212.253.33.49:80	66.43.179.88:1080
148.245.162.60:38994	203.214.128.138:80	212.253.33.55:80	66.5.146.224:80
159.226.195.136:45576	203.214.128.143:80	212.253.33.57:80	66.5.146.227:80
166.114.141.222:1080	203.214.128.148:80	212.253.33.61:80	66.5.146.228:80
166.114.94.214:3341	203.214.128.163:80	212.253.33.66:80	66.5.146.229:80
166.114.97.179:5748	203.214.128.176:80	212.253.33.76:80	66.5.146.232:80
167.7.9.198:1080	203.214.128.177:80	212.253.33.77:80	66.5.146.233:80
168.160.229.100:1080	203.214.128.178:80	212.253.33.81:80	66.5.146.234:80
168.226.123.170:1080	203.214.128.179:80	212.253.33.85:80	66.5.146.237:80
168.226.123.70:1080	203.214.128.180:80	212.253.33.86:80	66.5.146.238:80
168.226.128.14:1080	203.214.128.181:80	212.253.33.91:80	66.5.146.239:80

168.226.148.97:1080	203.214.128.201:80	212.253.33.96:80	66.5.146.242:80
168.226.183.61:1080	203.214.128.202:80	212.253.33.97:80	66.5.146.244:80
168.226.30.221:1080	203.214.128.207:80	212.253.39.101:80	66.5.146.247:80
168.226.67.228:1080	203.214.128.220:80	212.253.39.102:80	66.5.146.248:80
168.226.97.120:1080	203.214.128.221:80	212.253.39.109:80	66.5.146.249:80
168.243.238.146:80	203.214.128.222:80	212.253.39.121:80	66.5.146.252:80
168.243.44.12:1080	203.214.128.227:80	212.253.39.13:80	66.5.146.253:80
193.150.222.168:2280	203.214.128.228:80	212.253.39.131:80	66.5.146.254:80
193.165.19.4:14784	203.214.128.28:80	212.253.39.135:80	66.69.50.192:49169
193.171.251.202:3128	203.214.128.29:80	212.253.39.142:80	67.104.157.226:3800
193.178.233.142:80	203.214.128.3:80	212.253.39.145:80	67.124.208.116:1978
193.194.80.186:1080	203.214.128.39:80	212.253.39.146:80	67.160.158.221:3800
193.194.92.170:1080	203.214.128.4:80	212.253.39.149:80	67.162.107.118:6000
193.217.157.73:3380	203.214.128.50:80	212.253.39.157:80	67.162.203.121:2280
193.220.171.153:80	203.214.128.53:80	212.253.39.162:80	67.163.154.205:6000
193.227.168.2:80	203.214.128.55:80	212.253.39.169:80	67.164.113.111:1029
193.227.168.5:3128	203.214.128.57:80	212.253.39.17:80	67.164.131.221:6000
193.95.3.202:8080	203.214.128.58:80	212.253.39.218:80	67.165.242.194:4777
193.95.40.66:1080	203.214.128.6:80	212.253.39.226:80	67.169.42.148:22213
194.102.248.251:1080	203.214.128.66:80	212.253.39.229:80	67.20.80.95:1978
194.20.142.14:80	203.214.128.71:80	212.253.39.231:80	67.21.88.43:1978
194.206.224.138:1080	203.214.128.73:80	212.253.39.42:80	67.23.72.236:3380
194.208.86.225:7324	203.214.130.144:80	212.253.39.5:80	67.38.196.236:1080
194.225.106.33:1080	203.214.130.145:80	212.253.39.51:80	67.50.137.189:4455
194.37.73.129:8080	203.214.130.18:80	212.253.39.61:80	67.84.226.42:5104
194.67.176.194:18754	203.214.130.187:80	212.253.39.63:80	68.1.141.242:1813
194.67.220.151:80	203.214.130.191:80	212.253.39.69:80	68.10.119.115:3380
194.73.151.154:1080	203.214.130.209:80	212.253.39.70:80	68.10.85.48:3380
194.85.82.245:15859	203.214.130.224:80	212.253.39.8:80	68.100.113.92:1033
194.85.82.25:18754	203.214.130.227:80	212.253.39.83:80	68.100.240.150:1029
195.110.214.132:3128	203.214.130.236:80	212.253.39.91:80	68.100.241.222:1813
195.129.62.140:3128	203.214.130.240:80	212.253.39.93:80	68.100.57.57:1813
195.13.18.238:80	203.214.130.59:80	212.253.39.96:80	68.101.163.92:16875
195.131.97.25:15859	203.214.130.63:80	212.253.39.98:80	68.104.143.181:1033
195.149.98.37:8080	203.214.130.71:80	212.253.47.15:80	68.104.24.155:1029
195.157.217.187:1080	203.214.130.92:80	212.253.47.239:80	68.106.55.210:1813
195.170.234.200:18754	203.214.130.93:80	212.253.47.72:80	68.107.224.170:1080
195.170.59.204:18754	203.214.130.97:80	212.253.47.97:80	68.107.238.11:3330
195.174.139.215:3128	203.214.130.99:80	212.253.49.172:80	68.108.14.87:1029
195.219.110.71:80	203.214.131.0:80	212.253.49.182:80	68.109.7.57:1978
195.219.110.96:80	203.214.131.101:80	212.253.49.2:80	68.11.210.240:1212
195.219.176.14:3128	203.214.131.102:80	212.253.49.203:80	68.11.87.4:3380
195.230.177.42:3128	203.214.131.103:80	212.253.49.210:80	68.110.29.127:53122
195.238.41.189:1080	203.214.131.106:80	212.253.49.213:80	68.111.219.1:1978
195.46.140.130:3128	203.214.131.107:80	212.253.49.237:80	68.111.222.57:1978
195.94.1.118:1080	203.214.131.113:80	212.253.49.27:80	68.113.12.123:26493
195.94.3.127:80	203.214.131.114:80	212.253.8.107:80	68.113.132.161:7441
195.94.3.130:80	203.214.131.141:80	212.253.8.115:80	68.113.87.84:1080
195.94.3.132:80	203.214.131.142:80	212.253.8.116:80	68.114.105.77:13451
195.94.3.136:80	203.214.131.145:80	212.253.8.117:80	68.114.165.33:4777

195.94.3.138:80	203.214.131.146:80	212.253.8.120:80	68.114.4.165:4777
195.94.3.155:80	203.214.131.147:80	212.253.8.125:80	68.114.92.105:4777
195.94.3.168:80	203.214.131.149:80	212.253.8.135:80	68.115.127.178:1033
195.94.3.182:80	203.214.131.151:80	212.253.8.142:80	68.115.176.91:3380
195.94.3.185:80	203.214.131.154:80	212.253.8.145:80	68.116.248.90:1080
195.94.3.192:80	203.214.131.155:80	212.253.8.155:80	68.117.152.62:1978
195.94.3.195:80	203.214.131.157:80	212.253.8.162:80	68.118.134.211:4777
195.94.3.197:80	203.214.131.159:80	212.253.8.182:80	68.119.73.8:1978
195.94.3.220:80	203.214.131.165:80	212.253.8.187:80	68.121.227.177:1212
195.94.3.230:80	203.214.131.166:80	212.253.8.205:80	68.121.248.126:1080
195.94.3.231:80	203.214.131.168:80	212.253.8.208:80	68.122.56.193:13575
195.94.3.250:80	203.214.131.169:80	212.253.8.210:80	68.124.41.162:17722
195.94.3.36:80	203.214.131.170:80	212.253.8.215:80	68.13.121.162:1080
195.94.3.54:80	203.214.131.171:80	212.253.8.216:80	68.144.51.59:1978
196.28.63.250:1080	203.214.131.172:80	212.253.8.220:80	68.144.73.111:1978
198.26.120.255:80	203.214.131.173:80	212.253.8.230:80	68.145.236.136:1978
198.70.5.39:25032	203.214.131.175:80	212.253.8.255:80	68.147.32.250:1978
200.101.192.27:1080	203.214.131.176:80	212.253.9.0:80	68.15.135.83:1080
200.101.36.4:80	203.214.131.177:80	212.253.9.100:80	68.157.207.11:1978
200.101.36.7:80	203.214.131.184:80	212.253.9.106:80	68.157.228.42:1978
200.103.98.26:1080	203.214.131.19:80	212.253.9.107:80	68.157.243.20:1978
200.106.182.108:1080	203.214.131.192:80	212.253.9.109:80	68.164.57.4:1080
200.11.203.100:1080	203.214.131.195:80	212.253.9.11:80	68.165.34.10:1978
200.115.199.71:62739	203.214.131.197:80	212.253.9.111:80	68.167.120.52:13451
200.118.12.55:1080	203.214.131.199:80	212.253.9.13:80	68.168.176.107:1978
200.138.204.114:15859	203.214.131.200:80	212.253.9.131:80	68.170.187.154:1978
200.141.238.138:1080	203.214.131.219:80	212.253.9.132:80	68.170.72.57:1978
200.149.254.142:1080	203.214.131.221:80	212.253.9.14:80	68.170.82.140:39505
200.149.254.228:1080	203.214.131.223:80	212.253.9.143:80	68.171.41.35:1978
200.149.93.84:1080	203.214.131.229:80	212.253.9.147:80	68.185.100.59:1033
200.149.94.25:1080	203.214.131.231:80	212.253.9.15:80	68.185.184.107:3380
200.150.36.21:37876	203.214.131.239:80	212.253.9.159:80	68.185.184.225:10000
200.153.120.10:3128	203.214.131.241:80	212.253.9.160:80	68.187.195.22:7441
200.153.15.140:1080	203.214.131.242:80	212.253.9.17:80	68.196.1.77:1029
200.153.197.30:1080	203.214.131.243:80	212.253.9.181:80	68.2.127.118:1029
200.153.199.46:3128	203.214.131.244:80	212.253.9.19:80	68.2.129.246:1029
200.153.218.20:1080	203.214.131.245:80	212.253.9.191:80	68.2.42.78:1813
200.153.247.99:1978	203.214.131.247:80	212.253.9.195:80	68.2.98.87:1813
200.153.251.214:1978	203.214.131.249:80	212.253.9.203:80	68.202.226.158:59732
200.153.31.210:3128	203.214.131.25:80	212.253.9.207:80	68.202.4.71:1978
200.155.38.21:1080	203.214.131.251:80	212.253.9.213:80	68.225.247.237:6086
200.155.41.16:1080	203.214.131.253:80	212.253.9.241:80	68.23.49.51:1029
200.155.41.173:1080	203.214.131.255:80	212.253.9.25:80	68.32.119.204:3380
200.155.54.30:5748	203.214.131.27:80	212.253.9.26:80	68.33.195.211:4777
200.155.58.164:1080	203.214.131.3:80	212.253.9.81:80	68.35.142.42:1075
200.157.176.50:1080	203.214.131.31:80	212.253.9.85:80	68.39.212.13:13451
200.157.176.50:1080	203.214.131.35:80	212.27.205.58:80	68.39.253.97:41516
200.157.80.197:1080	203.214.131.8:80	212.29.184.89:3128	68.39.66.187:1029
200.158.100.58:1080	203.214.131.84:80	212.68.220.5:8080	68.4.125.128:1029
200.158.104.32:1080	203.214.131.86:80	212.68.234.72:57123	68.4.134.183:3380

200.158.122.102:1080	203.214.131.87:80	212.68.244.87:16337	68.4.69.43:3800
200.158.124.125:53201	203.214.131.89:80	212.85.196.102:80	68.40.60.20:1180
200.158.126.200:41934	203.214.131.99:80	212.85.196.108:80	68.40.78.71:2280
200.158.130.131:1080	203.215.76.54:3128	212.85.196.114:80	68.41.113.27:3800
200.158.199.250:1080	203.217.102.143:57123	212.85.196.120:80	68.41.135.79:13451
200.158.74.75:1080	203.221.179.13:25191	212.85.196.121:80	68.41.48.143:1029
200.158.94.53:1080	203.234.28.24:1813	212.85.196.122:80	68.42.87.65:4444
200.161.13.168:1080	203.234.54.211:1813	212.85.196.123:80	68.43.156.151:1029
200.161.135.42:53201	203.240.168.141:2280	212.85.196.136:80	68.43.192.83:3330
200.161.135.42:5748	203.255.11.143:2280	212.85.196.140:80	68.45.2.19:13451
200.161.139.222:1080	203.45.154.164:34330	212.85.196.142:80	68.46.40.22:3800
200.161.139.227:1080	203.45.52.252:20955	212.85.196.184:80	68.48.115.150:1075
200.161.157.53:18754	203.66.83.7:1978	212.85.196.76:80	68.48.153.22:1029
200.161.2.146:1080	203.80.105.208:7441	212.85.196.90:80	68.5.104.163:3380
200.161.205.155:1080	203.94.79.78:1080	212.92.8.102:3128	68.5.226.24:1978
200.161.205.155:53201	205.251.186.106:15859	212.96.193.117:18754	68.5.233.236:17525
200.161.212.252:1080	207.50.235.212:80	212.97.10.96:42092	68.5.62.111:3380
200.161.24.222:1080	208.178.165.12:80	213.10.180.122:3128	68.5.77.4:1978
200.161.29.84:53201	208.186.93.220:13451	213.113.9.145:3128	68.50.16.111:1029
200.161.4.84:1080	209.58.121.33:80	213.118.109.9:3128	68.50.67.49:1029
200.161.5.5:1080	209.58.121.37:80	213.118.128.111:26424	68.51.120.31:1180
200.161.64.219:1080	209.58.121.39:80	213.118.150.132:31905	68.52.147.174:1029
200.161.68.178:1080	209.88.121.130:1080	213.118.3.237:56569	68.57.163.254:51016
200.161.7.149:1080	210.11.135.13:4044	213.119.44.171:49729	68.58.141.180:1033
200.161.93.234:6826	210.124.105.82:13451	213.125.183.193:8080	68.58.166.167:3380
200.162.226.97:14784	210.179.43.198:5748	213.13.122.98:1080	68.58.93.110:8080
200.162.255.136:5748	210.187.112.6:13451	213.131.72.19:1080	68.6.163.27:3380
200.163.53.83:1080	210.187.38.96:1080	213.131.75.141:1080	68.6.174.47:1029
200.163.61.81:38994	210.203.95.140:3380	213.133.108.62:3128	68.6.200.152:1029
200.163.71.155:1080	210.212.140.35:80	213.134.170.198:8080	68.61.63.174:15399
200.164.10.182:1080	210.212.140.37:80	213.136.104.70:1080	68.62.157.89:2280
200.164.25.138:1080	210.212.140.86:80	213.136.107.105:38994	68.62.23.179:1029
200.164.254.178:1080	210.212.140.88:80	213.136.125.30:1080	68.62.47.204:1029
200.165.125.23:1080	210.22.21.114:1080	213.139.166.225:3128	68.63.161.222:29568
200.165.219.141:1080	210.240.24.131:3128	213.146.100.195:8000	68.63.164.196:22799
200.165.22.171:1080	210.254.245.194:1080	213.146.113.58:3128	68.65.85.198:1212
200.165.24.246:1080	210.3.1.22:3128	213.146.117.48:3128	68.66.68.74:3330
200.165.33.184:1080	210.61.220.61:1813	213.149.96.221:3128	68.68.239.207:1978
200.165.46.172:1080	210.75.121.248:1080	213.151.90.194:3128	68.69.187.9:1978
200.165.8.244:1080	211.101.28.244:1080	213.153.202.1:3128	68.69.198.16:1978
200.167.221.143:1080	211.115.128.194:5748	213.153.202.161:3128	68.69.9.243:1978
200.167.247.227:1080	211.117.42.200:4455	213.153.41.134:62571	68.70.31.104:4777
200.167.55.38:1080	211.119.61.215:2280	213.153.51.220:4250	68.71.11.93:1978
200.167.55.38:1080	211.142.89.86:1080	213.157.97.21:3128	68.76.189.145:1080
200.168.106.161:1080	211.171.54.66:45576	213.160.16.252:3128	68.79.242.132:1080
200.168.108.70:1080	211.172.210.52:2280	213.163.123.10:3128	68.80.188.91:32911
200.168.12.19:1080	211.178.244.56:1978	213.169.180.162:3128	68.80.213.87:3800
200.168.124.149:1080	211.183.72.33:2280	213.17.142.2:8080	68.80.223.23:1029
200.168.130.3:5748	211.185.194.194:8080	213.17.142.9:8080	68.82.140.191:1029
200.168.130.42:1080	211.185.200.252:8080	213.17.233.138:8080	68.83.243.241:3800

200.168.136.106:1080	211.197.227.157:8080	213.171.50.90:3128	68.84.127.234:3800
200.168.136.212:1080	211.20.107.123:7441	213.173.228.249:3128	68.84.138.47:1180
200.168.142.218:1978	211.20.151.73:1978	213.176.67.2:80	68.85.151.79:55586
200.168.142.35:53201	211.20.160.26:1978	213.178.76.41:3128	68.85.201.178:1029
200.168.142.35:5748	211.20.220.175:1978	213.179.133.145:3128	68.86.125.103:4455
200.168.151.212:1080	211.20.78.10:1978	213.180.48.235:3128	68.86.163.210:1029
200.168.154.236:1080	211.206.3.7:2280	213.186.88.106:8080	68.86.177.25:2280
200.168.158.248:1978	211.21.99.210:1978	213.187.220.93:3128	68.86.242.63:4777
200.168.16.107:53201	211.211.98.28:2280	213.191.103.227:3128	68.86.82.223:1029
200.168.160.195:1080	211.22.162.194:7441	213.194.152.170:1080	68.9.161.110:1029
200.168.170.140:53201	211.22.50.44:1978	213.199.21.194:80	68.9.229.46:1029
200.168.18.104:1080	211.22.7.240:1978	213.200.160.164:14784	68.97.181.202:1029
200.168.18.229:1080	211.241.188.42:1080	213.204.105.101:3128	68.97.19.81:27632
200.168.22.169:1080	211.241.188.42:7441	213.21.227.101:3128	68.98.252.182:3380
200.168.24.46:1080	211.241.223.188:1080	213.213.208.173:2280	68.98.32.111:1813
200.168.32.206:1080	211.242.81.100:2280	213.213.213.64:53176	68.99.118.230:1080
200.168.32.74:1080	211.245.94.130:1978	213.213.219.120:38994	68.99.254.21:1029
200.168.36.184:53201	211.249.88.158:2280	213.217.120.138:80	80.108.194.144:3380
200.168.4.122:1080	211.251.78.194:8080	213.217.196.153:29040	80.108.52.228:3380
200.168.4.134:1080	211.251.78.5:8080	213.221.133.103:1075	80.109.140.84:5748
200.168.4.18:1080	211.253.127.81:1180	213.224.173.175:8080	80.109.225.169:3380
200.168.40.78:1080	211.28.122.53:20183	213.226.138.67:3128	80.110.248.116:32065
200.168.57.226:1080	211.28.134.218:46269	213.233.118.202:8080	80.110.75.116:27519
200.168.6.153:1080	211.30.144.92:7776	213.237.103.108:3128	80.110.83.41:3380
200.168.64.112:1080	211.30.195.24:61443	213.237.83.86:3128	80.15.240.158:80
200.168.64.169:1080	211.30.71.36:14784	213.239.65.3:3128	80.200.10.205:29116
200.168.64.209:53201	211.34.21.2:8080	213.242.34.229:3128	80.201.115.131:29783
200.168.68.118:1080	211.44.9.3:1978	213.243.80.50:3128	80.201.220.33:4049
200.168.70.211:53201	211.52.252.177:5748	213.244.85.7:1080	80.201.52.65:32642
200.168.79.161:1080	211.59.53.189:2280	213.245.103.32:3128	80.218.85.100:13451
200.168.79.39:5748	211.72.213.4:7441	213.245.220.111:1080	80.230.184.155:1080
200.168.8.21:1080	211.75.122.143:2280	213.249.163.50:1080	80.236.133.164:3315
200.168.8.29:1080	211.75.220.123:8080	213.25.10.184:8080	80.24.130.152:1080
200.168.8.29:1080	211.76.97.245:8080	213.25.133.129:8080	80.24.25.186:1080
200.168.82.89:1080	211.91.112.219:1080	213.25.133.97:8080	80.249.67.123:80
200.168.86.116:1080	212.0.143.106:80	213.255.94.46:8080	80.249.67.124:80
200.168.86.151:1080	212.0.143.107:80	213.3.1.62:3128	80.249.67.173:80
200.168.86.214:1080	212.0.143.16:80	213.41.130.164:3128	80.249.67.188:80
200.168.87.109:1080	212.0.143.17:80	213.42.71.218:3128	80.249.67.189:80
200.168.87.158:1080	212.0.143.18:80	213.47.196.118:20662	80.249.67.190:80
200.168.90.87:1978	212.0.143.19:80	213.56.45.251:3128	80.249.67.199:80
200.168.90.87:1978	212.0.143.26:80	213.60.136.156:3128	80.249.67.219:80
200.168.95.142:53201	212.0.143.28:80	213.60.85.125:13043	80.249.67.221:80
200.168.96.234:1080	212.0.143.29:80	213.61.228.238:8080	80.249.67.222:80
200.17.97.110:3128	212.0.143.31:80	213.64.91.199:3330	80.249.67.226:80
200.170.104.140:1080	212.0.143.64:80	213.68.10.52:3128	80.249.67.227:80
200.170.105.242:1080	212.0.143.65:80	213.76.221.70:8080	80.249.67.233:80
200.170.184.138:1080	212.0.143.67:80	213.76.227.84:3128	80.249.67.25:80
200.170.184.36:1080	212.0.143.68:80	213.76.230.208:1080	80.249.67.98:80
200.170.185.28:1080	212.0.143.70:80	213.77.121.11:3128	80.249.67.99:80

200.170.231.50:1080	212.0.143.71:80	213.77.121.8:3128	80.249.70.103:80
200.170.34.111:1080	212.0.143.73:80	213.77.121.9:3128	80.249.70.119:80
200.170.34.154:1080	212.0.143.74:80	213.78.150.154:3128	80.249.70.12:80
200.170.34.246:1080	212.0.143.76:80	213.80.84.135:80	80.249.70.128:80
200.170.34.252:1080	212.0.143.77:80	213.80.84.155:80	80.249.70.131:80
200.170.34.74:1080	212.0.143.98:80	213.81.155.162:3128	80.249.70.154:80
200.170.42.211:1080	212.119.82.227:1080	213.81.172.10:3128	80.249.70.155:80
200.171.103.106:1080	212.142.226.174:1080	213.84.70.6:8080	80.249.70.156:80
200.171.103.120:1080	212.17.127.51:20955	213.85.90.230:1080	80.249.70.184:80
200.171.103.155:1080	212.18.36.154:8080	213.86.99.1:8080	80.249.70.194:80
200.171.111.99:1080	212.186.105.31:23374	213.89.202.14:7441	80.249.70.217:80
200.171.13.222:1080	212.186.108.54:56725	213.89.230.254:7441	80.249.70.224:80
200.171.14.175:1080	212.186.109.184:28176	213.89.38.152:7441	80.249.70.24:80
200.171.14.99:1080	212.186.28.112:40153	213.96.60.155:3128	80.249.70.241:80
200.171.147.81:1080	212.186.83.53:10151	213.96.96.148:3128	80.249.70.245:80
200.171.151.148:1080	212.187.115.157:54018	213.98.181.41:8080	80.249.70.25:80
200.171.152.214:1080	212.199.108.11:1080	216.115.91.2:1080	80.249.70.26:80
200.171.152.246:1978	212.199.138.161:57123	216.15.38.93:3380	80.249.70.27:80
200.171.156.55:1080	212.203.48.151:3330	216.166.252.210:2280	80.249.70.34:80
200.171.175.146:1080	212.22.136.7:3128	216.20.115.97:80	80.249.70.35:80
200.171.189.248:1080	212.22.169.35:1080	216.24.53.151:5748	80.249.70.36:80
200.171.237.221:13451	212.241.78.121:2280	216.248.3.206:1080	80.249.70.37:80
200.171.237.221:13451	212.25.77.190:80	216.90.127.206:1080	80.249.70.39:80
200.171.247.103:1080	212.253.10.0:80	217.120.132.250:52661	80.249.70.41:80
200.171.247.141:1080	212.253.10.117:80	217.126.165.149:5748	80.249.70.43:80
200.171.247.189:1080	212.253.10.182:80	217.126.191.81:8148	80.249.70.44:80
200.171.247.205:1080	212.253.10.250:80	217.129.230.197:36235	80.249.70.45:80
200.171.250.62:1080	212.253.10.252:80	217.136.131.114:30824	80.249.70.46:80
200.171.29.141:1080	212.253.10.35:80	217.136.4.21:47795	80.249.70.71:80
200.171.33.49:1080	212.253.10.38:80	217.139.131.190:1080	80.249.70.82:80
200.171.37.190:1080	212.253.10.42:80	217.217.138.37:1080	80.249.70.83:80
200.171.37.204:1080	212.253.10.45:80	217.219.138.226:1080	80.249.70.84:80
200.171.37.223:1080	212.253.10.47:80	217.219.47.133:1080	80.249.71.132:80
200.171.37.62:1080	212.253.10.49:80	217.45.133.181:1080	80.249.71.14:80
200.171.49.176:1080	212.253.10.55:80	217.52.241.42:1080	80.249.71.143:80
200.171.50.149:1080	212.253.10.60:80	217.6.103.122:1080	80.249.71.145:80
200.171.50.62:1080	212.253.10.62:80	217.96.222.72:1080	80.249.71.146:80
200.171.58.71:1080	212.253.10.63:80	218.104.106.99:1080	80.249.71.148:80
200.171.66.134:1080	212.253.10.74:80	218.148.24.183:1080	80.249.71.151:80
200.171.69.163:1080	212.253.10.80:80	218.158.73.181:1978	80.249.71.155:80
200.171.70.175:1080	212.253.10.83:80	218.188.13.52:1080	80.249.71.156:80
200.171.74.198:1080	212.253.10.85:80	218.20.115.47:1080	80.249.71.175:80
200.171.78.97:2280	212.253.11.119:80	218.22.48.211:1080	80.249.71.180:80
200.171.85.109:1080	212.253.11.129:80	218.244.196.28:1080	80.249.71.181:80
200.171.95.223:1080	212.253.11.13:80	218.247.228.188:1080	80.249.71.222:80
200.171.96.33:1080	212.253.11.133:80	218.27.204.32:1080	80.249.71.224:80
200.171.99.233:1080	212.253.11.144:80	218.38.24.138:1978	80.249.71.3:80
200.174.105.153:7441	212.253.11.15:80	218.38.40.45:1978	80.249.71.38:80
200.174.148.226:1080	212.253.11.160:80	218.38.95.166:1978	80.249.71.50:80
200.174.98.146:15859	212.253.11.162:80	218.39.219.163:2280	80.249.72.113:80

200.177.219.138:1080	212.253.11.18:80	218.39.86.45:1978	80.249.72.114:80
200.177.220.158:1080	212.253.11.180:80	218.49.54.188:2280	80.249.72.115:80
200.177.75.144:1080	212.253.11.191:80	218.5.254.129:1080	80.249.72.14:80
200.178.222.252:1080	212.253.11.199:80	218.55.59.93:1978	80.249.72.184:80
200.178.222.77:1080	212.253.11.227:80	218.56.136.42:1080	80.249.72.194:80
200.179.203.114:1080	212.253.11.228:80	218.56.14.242:1080	80.249.72.195:80
200.179.229.149:63145	212.253.11.232:80	218.56.144.163:1080	80.249.72.196:80
200.179.232.129:1080	212.253.11.233:80	218.58.74.200:1080	80.249.72.218:80
200.182.182.91:1080	212.253.11.234:80	218.62.73.152:45576	80.249.72.222:80
200.185.90.213:1080	212.253.11.235:80	218.63.103.240:3800	80.249.72.23:80
200.189.70.198:53201	212.253.11.237:80	218.75.121.3:1080	80.249.72.24:80
200.189.73.147:1080	212.253.11.25:80	218.75.72.106:1080	80.249.72.253:80
200.189.75.236:1080	212.253.11.29:80	218.75.80.189:1080	80.249.72.46:80
200.196.110.105:53311	212.253.11.3:80	218.86.33.74:1080	80.249.72.55:80
200.199.158.215:1080	212.253.11.30:80	218.89.1.200:1080	80.249.72.57:80
200.199.86.142:1080	212.253.11.32:80	218.91.207.202:5748	80.249.72.58:80
200.203.165.117:1080	212.253.11.40:80	219.145.84.234:1080	80.249.72.59:80
200.204.117.167:1080	212.253.11.45:80	219.234.140.244:1080	80.249.72.62:80
200.204.118.205:3128	212.253.11.47:80	219.237.81.119:1080	80.249.72.67:80
200.204.122.119:1080	212.253.11.50:80	219.238.31.251:1080	80.249.72.69:80
200.204.122.7:1080	212.253.11.51:80	219.238.38.252:1080	80.249.72.70:80
200.204.125.212:1080	212.253.11.53:80	219.250.111.125:2280	80.249.72.71:80
200.204.125.227:1813	212.253.11.59:80	219.51.0.6:15859	80.249.72.72:80
200.204.126.187:1080	212.253.11.65:80	221.140.217.236:2280	80.249.72.74:80
200.204.142.007:1080	212.253.11.66:80	221.153.69.189:2280	80.249.72.80:80
200.204.142.7:1080	212.253.11.67:80	24.1.108.18:3380	80.249.72.85:80
200.204.145.186:1080	212.253.11.68:80	24.1.202.175:3330	80.249.73.106:80
200.204.147.39:5748	212.253.11.7:80	24.1.30.209:1212	80.249.73.117:80
200.204.149.114:1080	212.253.11.71:80	24.1.55.39:1978	80.249.73.142:80
200.204.176.199:1080	212.253.11.76:80	24.107.137.96:3380	80.249.73.158:80
200.204.180.206:1080	212.253.12.143:80	24.108.11.204:3800	80.249.73.164:80
200.204.181.44:1080	212.253.12.146:80	24.108.9.15:1029	80.249.73.17:80
200.204.182.36:1080	212.253.12.199:80	24.117.108.174:1029	80.249.73.176:80
200.204.183.212:1080	212.253.12.209:80	24.118.251.28:2425	80.249.73.177:80
200.204.195.38:53201	212.253.12.221:80	24.126.166.101:1029	80.249.73.20:80
200.204.198.14:1080	212.253.12.241:80	24.127.176.33:1029	80.249.73.212:80
200.204.199.83:1080	212.253.12.43:80	24.127.183.94:13451	80.249.73.214:80
200.204.53.4:1080	212.253.12.46:80	24.130.186.198:7441	80.249.73.23:80
200.204.53.4:1080	212.253.12.5:80	24.141.194.168:1029	80.249.73.241:80
200.204.91.28:1080	212.253.12.55:80	24.147.184.115:2000	80.249.73.7:80
200.204.98.10:1080	212.253.12.71:80	24.154.201.102:6000	80.249.73.72:80
200.205.55.5:22691	212.253.12.92:80	24.155.52.40:1978	80.249.73.77:80
200.206.132.151:1080	212.253.13.10:80	24.158.132.9:1180	80.249.73.82:80
200.206.138.198:1080	212.253.13.112:80	24.159.43.20:2280	80.249.73.84:80
200.206.163.151:1080	212.253.13.115:80	24.159.83.38:1029	80.249.73.88:80
200.206.182.143:1080	212.253.13.117:80	24.165.232.196:7441	80.249.74.111:80
200.206.182.231:1080	212.253.13.121:80	24.170.133.149:1029	80.249.74.12:80
200.206.183.154:1080	212.253.13.124:80	24.175.109.176:1033	80.249.74.125:80
200.206.187.86:1080	212.253.13.127:80	24.185.54.231:1029	80.249.74.126:80
200.206.210.207:1080	212.253.13.130:80	24.186.155.175:1029	80.249.74.129:80

200.206.218.239:1080	212.253.13.134:80	24.186.216.191:4777	80.249.74.141:80
200.206.232.56:1080	212.253.13.135:80	24.186.217.52:1029	80.249.74.158:80
200.206.233.43:1080	212.253.13.14:80	24.187.197.149:1029	80.249.74.174:80
200.206.236.42:1080	212.253.13.147:80	24.189.234.124:1029	80.249.74.181:80
200.207.1.180:1080	212.253.13.154:80	24.196.132.19:1029	80.249.74.184:80
200.207.1.240:1080	212.253.13.157:80	24.196.139.190:1212	80.249.74.186:80
200.207.10.24:1080	212.253.13.168:80	24.197.146.219:13451	80.249.74.204:80
200.207.115.134:1080	212.253.13.187:80	24.197.165.188:3800	80.249.74.215:80
200.207.122.190:1080	212.253.13.189:80	24.199.70.98:7441	80.249.74.221:80
200.207.123.42:1080	212.253.13.190:80	24.200.229.155:22799	80.249.74.222:80
200.207.124.25:1080	212.253.13.191:80	24.213.250.49:1813	80.249.74.243:80
200.207.125.119:1080	212.253.13.199:80	24.214.173.182:7441	80.249.74.244:80
200.207.125.188:1080	212.253.13.210:80	24.214.20.141:13451	80.249.74.248:80
200.207.150.252:1080	212.253.13.217:80	24.214.61.83:1080	80.249.74.253:80
200.207.152.142:3341	212.253.13.224:80	24.215.181.237:3380	80.249.74.254:80
200.207.153.249:1080	212.253.13.230:80	24.217.225.236:33273	80.249.74.34:80
200.207.154.189:1080	212.253.13.252:80	24.218.254.45:1212	80.249.74.36:80
200.207.157.114:1080	212.253.13.35:80	24.218.86.139:4777	80.249.74.4:80
200.207.158.41:1080	212.253.13.42:80	24.232.16.166:1080	80.249.74.40:80
200.207.161.161:1080	212.253.13.49:80	24.232.92.18:1080	80.249.74.49:80
200.207.162.92:1080	212.253.13.58:80	24.236.67.246:3380	80.249.74.50:80
200.207.163.79:1080	212.253.13.6:80	24.238.217.39:3380	80.249.74.65:80
200.207.165.236:1080	212.253.13.63:80	24.239.236.87:10000	80.249.74.80:80
200.207.206.201:3341	212.253.13.65:80	24.239.85.140:22799	80.249.74.81:80
200.207.239.179:1080	212.253.13.66:80	24.247.168.153:1029	80.249.74.83:80
200.207.3.104:1080	212.253.13.67:80	24.247.205.155:11811	80.249.74.87:80
200.207.3.161:3128	212.253.13.69:80	24.247.238.248:34972	80.249.74.92:80
200.207.38.120:1080	212.253.13.7:80	24.28.123.129:1029	80.249.75.100:80
200.207.42.59:1080	212.253.13.70:80	24.42.94.143:1212	80.249.75.127:80
200.207.43.175:1080	212.253.13.80:80	24.47.114.131:22799	80.249.75.132:80
200.207.43.67:1080	212.253.13.84:80	24.5.124.29:2280	80.249.75.139:80
200.207.45.124:1080	212.253.13.89:80	24.50.130.208:1029	80.249.75.142:80
200.207.47.38:1080	212.253.13.91:80	24.51.196.54:1978	80.249.75.154:80
200.207.49.172:1080	212.253.13.92:80	24.53.11.240:1978	80.249.75.175:80
200.207.5.165:1080	212.253.13.93:80	24.58.247.247:10000	80.249.75.193:80
200.207.51.91:1080	212.253.13.94:80	24.59.32.89:13451	80.249.75.196:80
200.207.55.217:1080	212.253.14.30:80	24.6.155.175:3128	80.249.75.226:80
200.207.6.20:1080	212.253.14.5:80	24.60.123.139:7441	80.249.75.227:80
200.207.75.224:1080	212.253.31.10:80	24.60.168.226:7441	80.249.75.229:80
200.207.77.119:1080	212.253.31.112:80	24.61.239.230:7441	80.249.75.235:80
200.207.78.145:1080	212.253.31.115:80	24.64.111.65:1978	80.249.75.40:80
200.207.78.233:1080	212.253.31.116:80	24.65.236.103:3800	80.249.75.42:80
200.207.79.208:1080	212.253.31.118:80	24.67.247.21:1978	80.249.75.5:80
200.207.80.124:1080	212.253.31.124:80	24.68.114.10:3330	80.249.75.50:80
200.207.80.157:1080	212.253.31.126:80	24.68.144.4:1978	80.249.75.64:80
200.207.81.218:1080	212.253.31.133:80	24.71.217.12:2280	80.249.75.67:80
200.207.83.179:1080	212.253.31.135:80	24.71.65.90:1978	80.249.75.68:80
200.207.84.96:1080	212.253.31.140:80	24.71.76.152:1029	80.249.75.71:80
200.207.87.83:1080	212.253.31.147:80	24.73.144.32:1813	80.249.75.74:80
200.208.96.131:38994	212.253.31.15:80	24.73.58.32:1813	80.249.75.84:80

200.211.44.158:14784	212.253.31.157:80	24.73.63.148:1813	80.249.76.101:80
200.211.44.158:14784	212.253.31.161:80	24.73.67.106:1813	80.249.76.11:80
200.217.125.237:1080	212.253.31.162:80	24.73.95.138:1813	80.249.76.133:80
200.217.248.98:1080	212.253.31.168:80	24.78.102.21:1978	80.249.76.148:80
200.219.184.234:7441	212.253.31.17:80	24.8.126.229:1033	80.249.76.153:80
200.222.221.89:1080	212.253.31.170:80	24.8.214.224:47992	80.249.76.154:80
200.222.222.235:1080	212.253.31.172:80	24.80.75.20:1029	80.249.76.155:80
200.223.11.205:1080	212.253.31.180:80	24.83.105.57:1978	80.249.76.17:80
200.233.64.168:1080	212.253.31.186:80	24.83.153.48:1978	80.249.76.174:80
200.242.50.52:5748	212.253.31.195:80	24.83.4.6:1978	80.249.76.191:80
200.242.50.52:5748	212.253.31.196:80	24.84.136.59:1978	80.249.76.198:80
200.246.96.252:8080	212.253.31.21:80	24.85.164.149:1978	80.249.76.20:80
200.248.251.196:1080	212.253.31.226:80	24.85.241.193:1978	80.249.76.202:80
200.253.133.83:1080	212.253.31.234:80	24.87.15.29:1978	80.249.76.203:80
200.254.162.19:1080	212.253.31.238:80	24.87.249.212:1978	80.249.76.206:80
200.26.109.76:1080	212.253.31.241:80	24.87.79.57:1978	80.249.76.208:80
200.29.21.50:53201	212.253.31.243:80	24.9.43.248:31661	80.249.76.209:80
200.31.206.187:3128	212.253.31.246:80	24.90.131.53:1029	80.249.76.211:80
200.33.29.4:1080	212.253.31.252:80	24.91.10.185:5104	80.249.76.225:80
200.33.56.28:1080	212.253.31.27:80	24.91.129.59:3330	80.249.76.226:80
200.33.56.48:1080	212.253.31.32:80	24.91.154.99:8080	80.249.76.229:80
200.33.56.50:1080	212.253.31.35:80	24.97.104.26:1813	80.249.76.23:80
200.37.216.22:1080	212.253.31.36:80	24.97.82.147:1080	80.249.76.230:80
200.37.60.128:1080	212.253.31.38:80	24.99.19.90:5104	80.249.76.237:80
200.38.226.50:1080	212.253.31.4:80	24.99.80.107:3380	80.249.76.238:80
200.40.181.14:1080	212.253.31.40:80	4.61.149.112:1028	80.249.76.239:80
200.40.182.74:1080	212.253.31.43:80	61.10.63.75:1978	80.249.76.243:80
200.41.96.202:1080	212.253.31.46:80	61.103.124.109:2280	80.249.76.244:80
200.42.40.253:1080	212.253.31.52:80	61.11.33.190:1080	80.249.76.251:80
200.42.40.40:13451	212.253.31.56:80	61.11.76.58:1080	80.249.76.252:80
200.43.59.215:1080	212.253.31.67:80	61.132.4.116:1080	80.249.76.253:80
200.45.232.178:1080	212.253.31.74:80	61.145.75.162:1080	80.249.76.254:80
200.45.255.154:5748	212.253.31.8:80	61.150.115.245:1080	80.249.76.255:80
200.47.67.220:1978	212.253.33.0:80	61.157.95.251:1080	80.249.76.26:80
200.48.126.234:1080	212.253.33.1:80	61.18.154.48:2280	80.249.76.4:80
200.48.126.46:1080	212.253.33.102:80	61.18.213.188:7441	80.249.76.42:80
200.48.69.123:1080	212.253.33.105:80	61.182.248.15:1813	80.249.76.43:80
200.51.216.254:1080	212.253.33.107:80	61.182.248.183:1080	80.249.76.44:80
200.55.121.153:1080	212.253.33.108:80	61.187.104.207:45576	80.249.76.45:80
200.55.24.4:1080	212.253.33.109:80	61.199.198.218:3128	80.249.76.46:80
200.63.131.242:1080	212.253.33.11:80	61.221.128.176:1978	80.249.76.47:80
200.63.148.212:1080	212.253.33.110:80	61.221.239.110:3128	80.249.76.48:80
200.66.80.11:7441	212.253.33.112:80	61.222.133.58:1978	80.249.76.54:80
200.67.167.42:1080	212.253.33.12:80	61.222.168.198:3800	80.249.76.55:80
200.69.24.109:1080	212.253.33.120:80	61.238.157.142:3800	80.249.76.56:80
200.75.217.254:7441	212.253.33.121:80	61.243.43.113:1080	80.249.76.57:80
200.78.206.193:1080	212.253.33.122:80	61.30.136.41:1813	80.249.76.69:80
200.80.157.143:1080	212.253.33.125:80	61.30.44.179:1813	80.249.76.7:80
200.80.160.171:1080	212.253.33.126:80	61.32.53.132:1813	80.249.76.70:80
200.80.161.147:1080	212.253.33.131:80	61.33.134.194:1978	80.249.76.71:80

200.80.211.114:1080	212.253.33.132:80	61.53.50.4:1080	80.249.76.75:80
200.80.27.210:1080	212.253.33.136:80	61.54.139.124:1080	80.26.92.222:7441
200.80.61.184:1080	212.253.33.138:80	61.56.200.249:1080	80.28.13.201:53201
200.80.61.184:1080	212.253.33.14:80	61.81.67.60:1978	80.32.12.234:8080
200.84.49.54:53311	212.253.33.141:80	61.88.104.242:3380	80.32.132.177:3330
200.87.103.139:1080	212.253.33.142:80	61.88.104.242:3380	80.33.121.100:1080
200.87.103.139:1080	212.253.33.143:80	62.139.168.218:1080	80.33.185.209:7441
200.89.166.234:7353	212.253.33.144:80	62.143.163.117:3800	80.35.162.100:1080
200.91.229.218:19097	212.253.33.145:80	62.143.163.117:5748	80.53.122.110:3128
200.93.15.183:38994	212.253.33.146:80	62.150.5.178:1080	80.55.215.115:80
200.93.16.249:1080	212.253.33.147:80	62.150.84.71:80	80.55.216.30:3128
200.93.24.144:1080	212.253.33.149:80	62.152.120.11:80	80.56.187.128:2425
200.93.84.68:1080	212.253.33.151:80	62.166.180.181:2425	80.59.142.233:1080
200.96.194.228:1080	212.253.33.152:80	62.178.1.16:30757	80.81.37.89:1080
200.97.128.3:1080	212.253.33.154:80	62.178.115.62:46910	80.90.166.75:80
200.97.27.21:1080	212.253.33.156:80	62.178.144.113:33786	81.10.17.50:1080
202.107.203.76:1080	212.253.33.157:80	62.178.252.234:63329	81.10.4.106:1080
202.108.207.179:1080	212.253.33.166:80	62.178.31.120:18284	81.10.4.54:1080
202.108.207.182:1080	212.253.33.172:80	62.178.44.142:65105	81.13.69.84:18754
202.129.11.197:1080	212.253.33.173:80	62.178.70.121:3380	81.164.108.245:16877
202.131.2.196:1080	212.253.33.176:80	62.213.16.29:18754	81.164.130.74:20332
202.133.201.100:1080	212.253.33.18:80	62.216.14.72:80	81.165.148.170:22799
202.157.79.41:6588	212.253.33.180:80	62.240.110.211:80	81.190.15.87:25750
202.157.79.42:6588	212.253.33.181:80	62.240.110.232:80	81.190.51.207:1080
202.163.223.11:1978	212.253.33.182:80	62.240.110.249:80	81.190.62.110:46222
202.175.238.18:1080	212.253.33.183:80	62.42.88.152:1080	81.199.13.134:1080
202.29.69.2:1080	212.253.33.186:80	62.43.71.127:1080	81.203.55.142:2425
202.41.160.121:8080	212.253.33.188:80	62.47.182.217:6910	81.218.133.180:22799
202.54.87.146:1978	212.253.33.191:80	62.68.48.218:1080	81.240.161.31:21922
202.56.255.18:13451	212.253.33.192:80	62.81.198.160:80	81.240.80.31:25042
202.72.189.217:1080	212.253.33.193:80	62.81.198.161:80	81.6.51.122:1080
202.86.192.186:1080	212.253.33.196:80	62.81.198.185:80	81.65.36.251:1080
202.88.152.132:80	212.253.33.197:80	62.81.198.191:80	81.66.226.45:58784
212.253.33.200:80	212.253.33.205:80	62.81.198.255:80	81.83.75.207:9778
81.96.12.166:2425	82.139.14.50:42298	62.81.198.28:80	